

# Microwave-Measurement

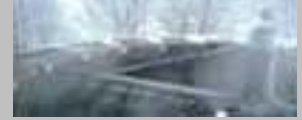
in use in municipal and private wastewater plants



Auswerteeinheit HK1-M

## Total Solids Measure of waste water/sludge

# HK1-M



Latest digital microwave technology at 2,45 GHz.  
**Wherever the total solids are a relevant issue in waste water plants**

The measurement is useful for the detection of the total solids in precleaned or finished waste water or sludge

The measurement can take place at different locations in dependence of the engineering procedure and the flow rate:

- > as it is pumped from the primary settling tank
- > as it is pumped from a storage pond
- > as it is pumped to an incinerator



Designed to the various engineering requirements, alternative sensorsystems can be connected with the evaluation unit:

\*pinantennas for the measurement at pipes and tanks, standard flange DN65 PN6 or DN80 PN6, distance 55 or 65mm, dip in-length 195mm.

\*flow-cell for short pinantennas for the measurement in pipes, the distance of the two pins is adjusted to the measure-range.

\*flow-cell for mini-spiralantennas for the measurement in pipes with a distance between both sensors of max. 15cm.

\*flow-cell for spiralantennas for the measurement at pipes with a distance between both sensors of max. 20cm.

**Rugged design: alu housing IP65**  
**No moving parts, no wear and tear,**  
**vibrations have no influence to the result of measurement. Suitable for the use in raw field environment. No maintenance necessary.**  
**In case of unfavourable conditions an alternative remote control with PC or separate operating device is possible.**

**Basic calibration at delivery**

success through innovation

**25 years experience**

T: +49-(0)7084-928410 F: +49-(0)7084-928429

info@harrerkassen.com

www.harrerkassen.com



Harrer & Kassen GmbH

Am Heschen 6  
75328 Langenbrand  
Germany

